

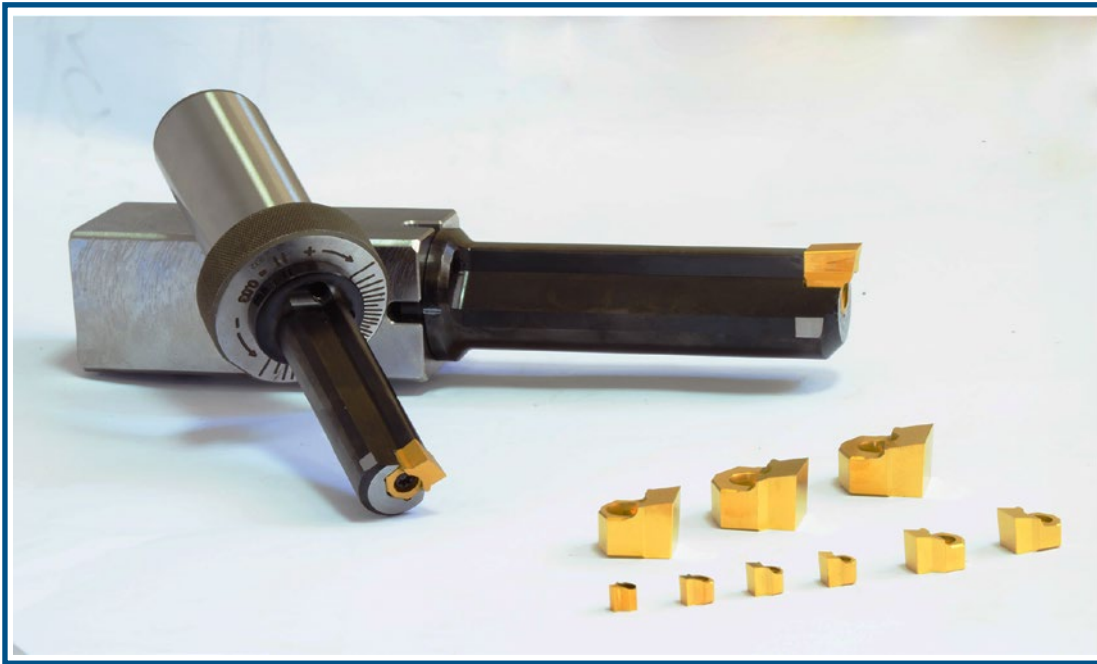


NUTSTOßWERKZEUGE
SLOTING TOOLS

2016

TECHNOLOGY IN MOTION

Nutstoßwerkzeuge Slotting Tools



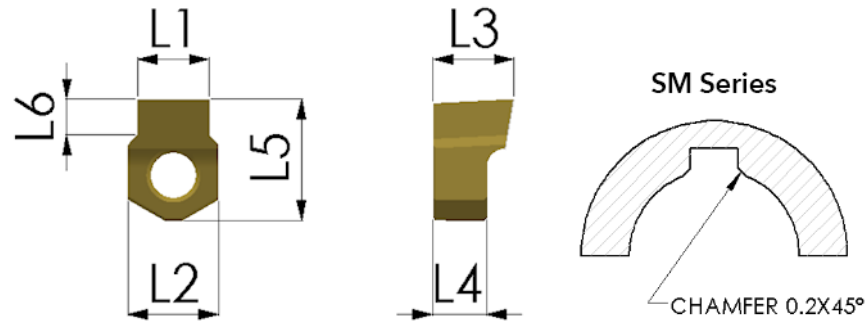
Nutstoßwerkzeuge

- ▼ Ideale Lösung für Nutstoßen auf Bearbeitungszentren und Drehmaschinen
- ▼ Werkzeuge gefertigt aus gehärtetem Werkzeugstahl
- ▼ Plattensitz gehärtet: 58-60 HRC
- ▼ Ø3,5 Bohrungen für Kühlmittelzuführung
- ▼ Sonderwerkzeuge kurzfristig lieferbar auf Anfrage

Slotting Tools

- ▼ *Ideal solution for slotting on CNC Turning and Milling Machines*
- ▼ *Made of hardened tool steel*
- ▼ *The seat of the insert is hardened at 58-60 HRC*
- ▼ *3.5 mm holes for forced-feed lubrication*
- ▼ *Fast delivery for special tools upon request*



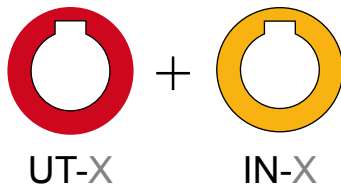


Platten

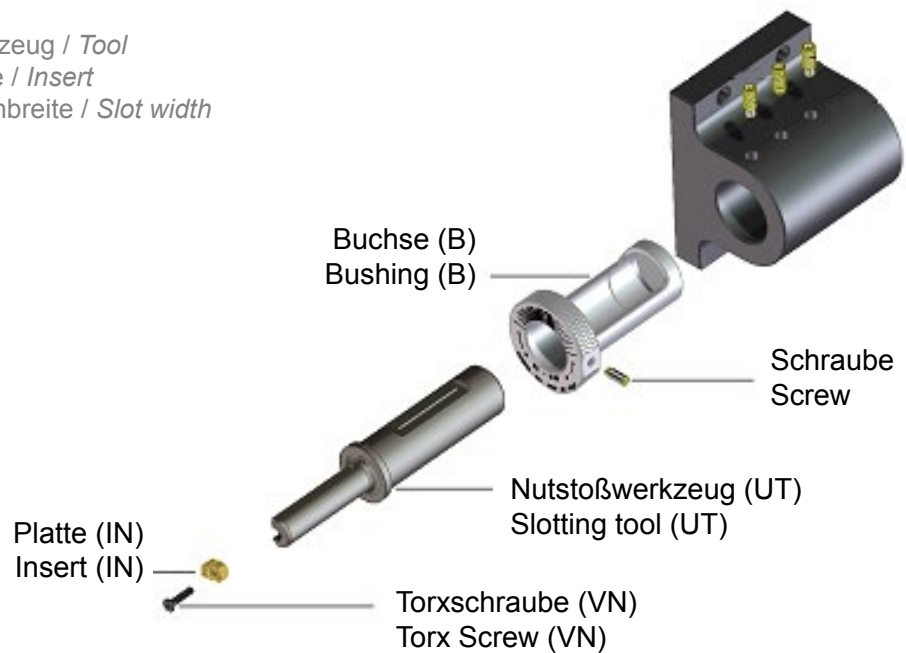
- ▶ Gesinterte HSS-Legierung mit Cobalt
- ▶ Bessere Leistung als Hartmetall
- ▶ Härte: 72 HRC
- ▶ TIN beschichtet
- ▶ Mehrmaliges Nachschleifen möglich
- ▶ Sonderwerkzeuge auf Anfrage

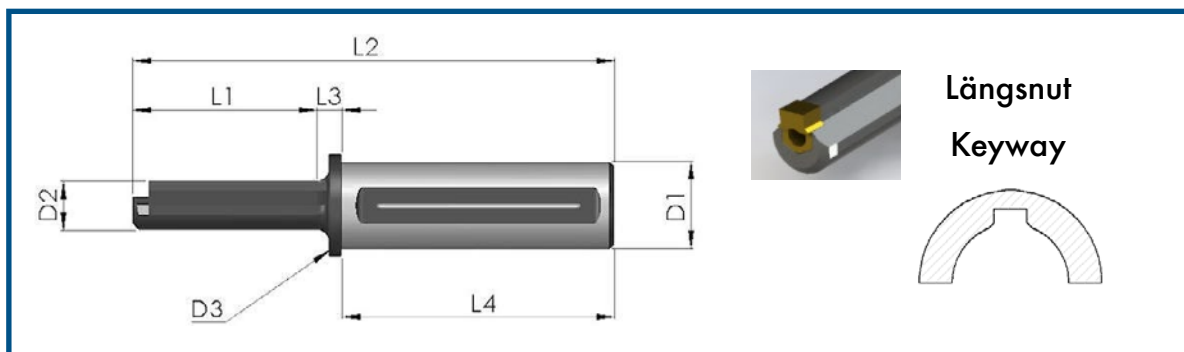
Inserts

- ▶ Sintered HSS alloy with cobalt
- ▶ Performance superior to carbide
- ▶ Hardness: 72 HRC
- ▶ TIN coating
- ▶ Can be sharpened several times
- ▶ Special tools upon client's request



UT Werkzeug / Tool
 IN Platte / Insert
 X Nutenbreite / Slot width

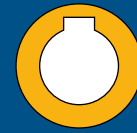




CODE	L1	L2	L3	L4	D1	D2	D3	P	T	V	Min Ø
UT-02-25	25	124	9	90	25	6,5	30	PN-1	T08	VN-1	7
UT-02-25-L	34,5	133,5	9	90	25	6,5	30	PN-1	T08	VN-1	7
UT-03-25	30	129	9	90	25	8	30	PN-1	T08	VN-1	8,5
UT-03-25-L	40	139	9	90	25	8	30	PN-1	T08	VN-1	8,5
UT-04-25	40	139	9	90	25	10	30	PN-1	T08	VN-1	10,5
UT-04-25-L	56	155	9	90	25	10	30	PN-1	T08	VN-1	10,5
UT-05-25	46	145	9	90	25	12	30	PN-1	T08	VN-1	12,5
UT-05-25-L	66	165	9	90	25	12	30	PN-1	T08	VN-1	12,5
UT-06-25	56	155	9	90	25	16	30	PN-2	T15	VN-2	16,5
UT-06-25-L	81	180	9	90	25	16	30	PN-2	T15	VN-2	16,5
UT-08-25	68	162	9	90	25	20	30	PN-2	T15	VN-2	21
UT-08-25-L	100	199	9	90	25	20	30	PN-2	T15	VN-2	21
UT-10-25	86	185	9	90	25	25	30	PN-3	T20	VN-3	28
UT-10-25-L	126	225	9	90	25	25	30	PN-3	T20	VN-3	28
UT-12-25	102	203	9	90	25	30	30	PN-3	T20	VN-3	30
UT-12-25-L	160	260	9	90	25	30	30	PN-3	T20	VN-3	30
UT-14/16-25	126	221	5	90	25	35	37	PN-4	T20	VN-3	38
UT-14/16-25-L	180	285	5	100	35	25	37	PN-4	T20	VN-3	38
UT-02-32	25	134	9	100	32	6,5	37	PN-1	T08	VN-1	7
UT-02-32-L	34,5	143,5	9	100	32	6,5	37	PN-1	T08	VN-1	7
UT-03-32	30	139	9	100	32	8	37	PN-1	T08	VN-1	8,5
UT-03-32-L	40	149	9	100	32	8	37	PN-1	T08	VN-1	8,5
UT-04-32	40	149	9	100	32	10	37	PN-1	T08	VN-1	10,5
UT-04-32-L	56	165	9	100	32	10	37	PN-1	T08	VN-1	10,5
UT-05-32	46	155	9	100	32	12	37	PN-1	T08	VN-1	12,5
UT-05-32-L	66	165	9	100	32	12	37	PN-1	T08	VN-1	12,5
UT-06-32	56	165	9	100	32	16	37	PN-2	T15	VN-2	16,5
UT-06-32-L	81	190	9	100	32	16	37	PN-2	T15	VN-2	16,5
UT-08-32	68	172	9	100	32	20	37	PN-2	T15	VN-2	21
UT-08-32-L	100	209	9	100	32	20	37	PN-2	T15	VN-2	21
UT-10-32	86	195	9	100	32	25	37	PN-3	T20	VN-3	28
UT-10-32-L	126	235	9	100	32	25	37	PN-3	T20	VN-3	28
UT-12-32	102	213	9	100	32	30	37	PN-3	T20	VN-3	30
UT-12-32-L	160	270	9	100	32	30	37	PN-3	T20	VN-3	30
UT-14/16-32	126	231	9	100	32	35	37	PN-4	T20	VN-3	35
UT-14/16-32-L	180	285	9	100	32	35	37	PN-4	T20	VN-3	35
UT-18/25-32	140	249	9	100	32	40	45	PN-5	BR5	VN-4	42
UT-18/25-32-L	200	309	9	100	32	40	45	PN-5	BR5	VN-4	42



Platten

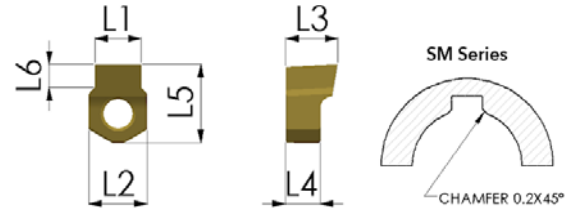


mm

IN



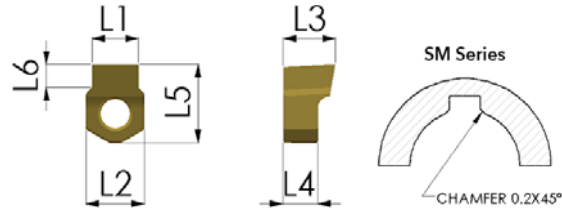
Inserts



CODE	L1	L2	L3	L4	L5	L6	Tool	RF
IN-02 P6	1,994	6,08	6,5	5	6,5	1,30	UT-02	RF-1
IN-02 P6-SM	1,994	6,08	6,5	5	6,5	1,09	UT-02	RF-1
IN-02 H7	2,010	6,08	6,5	5	6,5	1,30	UT-02	RF-1
IN-02 H7-SM	2,010	6,08	6,5	5	6,5	1,09	UT-02	RF-1
IN-02 D10	2,060	6,08	6,5	5	6,5	1,30	UT-02	RF-1
IN-02 C11	2,120	6,08	6,5	5	6,5	1,30	UT-02	RF-1
IN-03 P6	2,994	6,08	7	5	7,5	2,00	UT-03	RF-1
IN-03 P6-SM	2,994	6,08	7	5	7,5	1,42	UT-03	RF-1
IN-03 H7	3,010	6,08	7	5	7,5	2,00	UT-03	RF-1
IN-03 H7-SM	3,010	6,08	7	5	7,5	1,42	UT-03	RF-1
IN-03 D10	3,060	6,08	7	5	7,5	2,00	UT-03	RF-1
IN-03 C11	3,120	6,08	7	5	7,5	2,00	UT-03	RF-1
IN-04 P6	3,991	6,08	7	5	8	2,60	UT-04	RF-1
IN-04 P6-SM	3,991	6,08	7	5	8	2,07	UT-04	RF-1
IN-04 H7	4,012	6,08	7	5	8	2,60	UT-04	RF-1
IN-04 H7-SM	4,012	6,08	7	5	8	2,07	UT-04	RF-1
IN-04 D10	4,078	6,08	7	5	8	2,60	UT-04	RF-1
IN-04 C11	4,145	6,08	7	5	8	2,60	UT-04	RF-1
IN-05 P6	4,991	6,08	7	5	8	3,00	UT-05	RF-1
IN-05 P6-SM	4,991	6,08	7	5	8	2,74	UT-05	RF-1
IN-05 H7	5,012	6,08	7	5	8	3,00	UT-05	RF-1
IN-05 H7-SM	5,012	6,08	7	5	8	2,74	UT-05	RF-1
IN-05 D10	5,078	6,08	7	5	8	3,00	UT-05	RF-1
IN-05 C11	5,145	6,08	7	5	8	3,00	UT-05	RF-1
IN-06 P6	5,991	10,08	9	6	13,5	4,00	UT-06	RF-2
IN-06 P6-SM	5,991	10,08	9	6	13,5	3,00	UT-06	RF-2
IN-06 H7	6,012	10,08	9	6	13,5	4,00	UT-06	RF-2
IN-06 H7-SM	6,012	10,08	9	6	13,5	3,00	UT-06	RF-2
IN-06 D10	6,078	10,08	9	6	13,5	4,00	UT-06	RF-2
IN-06 C11	6,145	10,08	9	6	13,5	4,00	UT-06	RF-2
IN-08 P6	7,988	10,08	9	6	13,5	4,50	UT-08	RF-2
IN-08 P6-SM	7,988	10,08	9	6	13,5	3,78	UT-08	RF-2
IN-08 H7	8,015	10,08	9	6	13,5	4,50	UT-08	RF-2
IN-08 H7-SM	8,015	10,08	9	6	13,5	3,78	UT-08	RF-2
IN-08 D10	8,098	10,08	9	6	13,5	4,50	UT-08	RF-2
IN-08 C11	8,170	10,08	9	6	13,5	4,50	UT-08	RF-2
IN-10 P6	9,988	13,1	14	10	18,5	6,00	UT-10	RF-3
IN-10 P6-SM	9,988	13,1	14	10	18,5	3,88	UT-10	RF-3
IN-10 H7	10,015	13,1	14	10	18,5	6,00	UT-10	RF-3
IN-10 H7-SM	10,015	13,1	14	10	18,5	3,88	UT-10	RF-3
IN-10 D10	10,098	13,1	14	10	18,5	6,00	UT-10	RF-3
IN-10 C11	10,170	13,1	14	10	18,5	6,00	UT-10	RF-3



Inserts



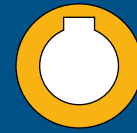
CODE	L1	L2	L3	L4	L5	L6	Tool	RF
IN-12 P6	11,985	13,1	14	10	18,5	6,50	UT-12	RF-3
IN-12 P6-SM	11,985	13,1	14	10	18,5	3,89	UT-12	RF-3
IN-12 H7	12,018	13,1	14	10	18,5	6,50	UT-12	RF-3
IN-12 H7-SM	12,018	13,1	14	10	18,5	3,89	UT-12	RF-3
IN-12 D10	12,120	13,1	14	10	18,5	6,50	UT-12	RF-3
IN-12 C11	12,205	13,1	14	10	18,5	6,50	UT-12	RF-3
IN-14 P6	13,985	18	14	10	22	7,00	UT-14/16	RF-4
IN-14 P6-SM	13,985	18	14	10	22	4,71	UT-14/16	RF-4
IN-14 H7	14,018	18	14	10	22	7,00	UT-14/16	RF-4
IN-14 H7-SM	14,018	18	14	10	22	4,71	UT-14/16	RF-4
IN-14 D10	14,120	18	14	10	22	7,00	UT-14/16	RF-4
IN-14 C11	14,205	18	14	10	22	7,00	UT-14/16	RF-4
IN-16 P6	15,985	18	14	10	22	8,00	UT-14/16	RF-4
IN-16 P6-SM	15,985	18	14	10	22	5,53	UT-14/16	RF-4
IN-16 H7	16,018	18	14	10	22	8,00	UT-14/16	RF-4
IN-16 H7-SM	16,018	18	14	10	22	5,53	UT-14/16	RF-4
IN-16 D10	16,120	18	14	10	22	8,00	UT-14/16	RF-4
IN-16 C11	16,205	18	14	10	22	8,00	UT-14/16	RF-4
IN-18 P6**	17,982	26	16	10	30	11,00	UT-18/25	RF-5
IN-18 P6-SM**	17,982	26	16	10	30	5,67	UT-18/25	RF-5
IN-18 H7**	18,021	26	16	10	30	11,00	UT-18/25	RF-5
IN-18 H7-SM**	18,021	26	16	10	30	5,67	UT-18/25	RF-5
IN-18 D10**	18,149	26	16	10	30	11,00	UT-18/25	RF-5
IN-18 C11**	18,240	26	16	10	30	11,00	UT-18/25	RF-5
IN-20 P6**	19,982	26	16	10	30	10,00	UT-18/25	RF-5
IN-20 P6-SM**	19,982	26	16	10	30	6,29	UT-18/25	RF-5
IN-20 H7**	20,021	26	16	10	30	10,00	UT-18/25	RF-5
IN-20 H7-SM**	20,021	26	16	10	30	6,29	UT-18/25	RF-5
IN-20 D10**	20,149	26	16	10	30	10,00	UT-18/25	RF-5
IN-20 C11**	20,240	26	16	10	30	10,00	UT-18/25	RF-5
IN-22 P6**	21,982	26	16	10	30	11,00	UT-18/25	RF-5
IN-22 P6-SM**	21,982	26	16	10	30	6,79	UT-18/25	RF-5
IN-22 H7**	22,021	26	16	10	30	11,00	UT-18/25	RF-5
IN-22 H7-SM**	22,021	26	16	10	30	6,79	UT-18/25	RF-5
IN-22 D10**	22,149	26	16	10	30	11,00	UT-18/25	RF-5
IN-22 C11**	22,240	26	16	10	30	11,00	UT-18/25	RF-5
IN-25 P6**	24,982	26	16	10	30	12,00	UT-18/25	RF-5
IN-25 P6-SM**	24,982	26	16	10	30	7,02	UT-18/25	RF-5
IN-25 H7**	25,021	26	16	10	30	12,00	UT-18/25	RF-5
IN-25 H7-SM**	25,021	26	16	10	30	7,02	UT-18/25	RF-5
IN-25 D10**	25,149	26	16	10	30	12,00	UT-18/25	RF-5
IN-25 C11**	25,240	26	16	10	30	12,00	UT-18/25	RF-5

** Rohbearbeitung + Feinbearbeitung empfohlen

** Roughing + Finishing recommended



Platten

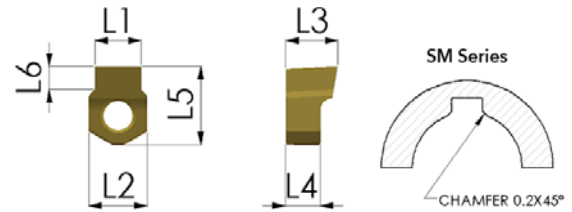


inch

IN



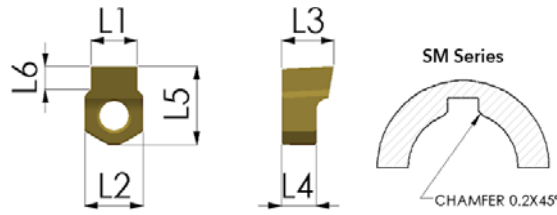
Inserts



CODE	L1 mm	L1 inch	L2 inch	L3 inch	L4 inch	L5 inch	L6 inch	Tool	RF
IN-3/32"-P6	2.3692	0.0932	0.2362	0.2755	0.1968	0.2559	0.0551	UT-02	RF-1
IN-3/32"-H7	2.3912	0.0941	0.2362	0.2755	0.1968	0.2559	0.0551	UT-02	RF-1
IN-3/32"-D10	2.4412	0.0961	0.2362	0.2755	0.1968	0.2559	0.0551	UT-02	RF-1
IN-3/32"-C11	2.5012	0.0984	0.2362	0.2755	0.1968	0.2559	0.0551	UT-02	RF-1
IN-1/8"-P6	3.1580	0.1243	0.2362	0.2755	0.1968	0.3149	0.0905	UT-03	RF-1
IN-1/8"-H7	3.1870	0.1254	0.2362	0.2755	0.1968	0.3149	0.0905	UT-03	RF-1
IN-1/8"-D10	3.2530	0.1280	0.2362	0.2755	0.1968	0.3149	0.0905	UT-03	RF-1
IN-1/8"-C11	3.3200	0.1307	0.2362	0.2755	0.1968	0.3149	0.0905	UT-03	RF-1
IN-5/32"-P6	3.9517	0.1555	0.2362	0.2755	0.1968	0.3149	0.1141	UT-04	RF-1
IN-5/32"-H7	3.9807	0.1567	0.2362	0.2755	0.1968	0.3149	0.1141	UT-04	RF-1
IN-5/32"-D10	4.0467	0.1593	0.2362	0.2755	0.1968	0.3149	0.1141	UT-04	RF-1
IN-5/32"-C11	4.1137	0.1619	0.2362	0.2755	0.1968	0.3149	0.1141	UT-04	RF-1
IN-3/16"-P6	4.7455	0.1868	0.2362	0.2755	0.1968	0.3149	0.1299	UT-05	RF-1
IN-3/16"-H7	4.7745	0.1879	0.2362	0.2755	0.1968	0.3149	0.1299	UT-05	RF-1
IN-3/16"-D10	4.8405	0.1905	0.2362	0.2755	0.1968	0.3149	0.1299	UT-05	RF-1
IN-3/16"-C11	4.9075	0.1932	0.2362	0.2755	0.1968	0.3149	0.1299	UT-05	RF-1
IN-1/4"-P6	6.3290	0.2491	0.3937	0.3543	0.2362	0.5314	0.1587	UT-06	RF-2
IN-1/4"-H7	6.3650	0.2505	0.3937	0.3543	0.2362	0.5314	0.1587	UT-06	RF-2
IN-1/4"-D10	6.4480	0.2538	0.3937	0.3543	0.2362	0.5314	0.1587	UT-06	RF-2
IN-1/4"-C11	6.5200	0.2566	0.3937	0.3543	0.2362	0.5314	0.1587	UT-06	RF-2
IN-9/32"-P6	7.1227	0.2804	0.3937	0.3543	0.2362	0.5314	0.1692	UT-08	RF-2
IN-9/32"-H7	7.1587	0.2818	0.3937	0.3543	0.2362	0.5314	0.1692	UT-08	RF-2
IN-9/32"-D10	7.2417	0.2851	0.3937	0.3543	0.2362	0.5314	0.1692	UT-08	RF-2
IN-9/32"-C11	7.3137	0.2879	0.3937	0.3543	0.2362	0.5314	0.1692	UT-08	RF-2
IN-5/16"-P6	7.9165	0.3116	0.3937	0.3543	0.2362	0.5314	0.1875	UT-08	RF-2
IN-5/16"-H7	7.9525	0.3130	0.3937	0.3543	0.2362	0.5314	0.1875	UT-08	RF-2
IN-5/16"-D10	8.0355	0.3163	0.3937	0.3543	0.2362	0.5314	0.1875	UT-08	RF-2
IN-5/16"-C11	8.1075	0.3191	0.3937	0.3543	0.2362	0.5314	0.1875	UT-08	RF-2



Inserts



CODE	L1 mm	L1 inch	L2 inch	L3 inch	L4 inch	L5 inch	L6 inch	Tool	RF
IN-3/8"-P6	9.5040	0.3741	0.5118	0.5511	0.3937	0.7283	0.2500	UT-10	RF-3
IN-3/8"-H7	9.5400	0.3755	0.5118	0.5511	0.3937	0.7283	0.2500	UT-10	RF-3
IN-3/8"-D10	9.6230	0.3788	0.5118	0.5511	0.3937	0.7283	0.2500	UT-10	RF-3
IN-3/8"-C11	9.6950	0.3816	0.5118	0.5511	0.3937	0.7283	0.2500	UT-10	RF-3
IN-7/16"-P6	11.0865	0.4364	0.7086	0.5511	0.3937	0.8661	0.2500	UT-12	RF-3
IN-7/16"-H7	11.1305	0.4382	0.7086	0.5511	0.3937	0.8661	0.2500	UT-12	RF-3
IN-7/16"-D10	11.2325	0.4422	0.7086	0.5511	0.3937	0.8661	0.2500	UT-12	RF-3
IN-7/16"-C11	11.3175	0.4455	0.7086	0.5511	0.3937	0.8661	0.2500	UT-12	RF-3
IN-1/2"-P6	12.6740	0.4989	0.7086	0.5511	0.3937	0.8661	0.3000	UT-12	RF-3
IN-1/2"-H7	12.7180	0.5007	0.7086	0.5511	0.3937	0.8661	0.3000	UT-12	RF-3
IN-1/2"-D10	12.8200	0.5047	0.7086	0.5511	0.3937	0.8661	0.3000	UT-12	RF-3
IN-1/2"-C11	12.9050	0.5080	0.7086	0.5511	0.3937	0.8661	0.3000	UT-12	RF-3
IN-9/16"-P6	14.2615	0.5614	0.7086	0.5511	0.3937	0.8661	0.2750	UT-14/16	RF-4
IN-9/16"-H7	14.3055	0.5632	0.7086	0.5511	0.3937	0.8661	0.2750	UT-14/16	RF-4
IN-9/16"-D10	14.4075	0.5672	0.7086	0.5511	0.3937	0.8661	0.2750	UT-14/16	RF-4
IN-9/16"-C11	14.4925	0.5705	0.7086	0.5511	0.3937	0.8661	0.2750	UT-14/16	RF-4
IN-5/8"-P6	15.8490	0.6239	0.7086	0.5511	0.3937	0.8661	0.3120	UT-14/16	RF-4
IN-5/8"-H7	15.8930	0.6257	0.7086	0.5511	0.3937	0.8661	0.3120	UT-14/16	RF-4
IN-5/8"-D10	15.9950	0.6297	0.7086	0.5511	0.3937	0.8661	0.3120	UT-14/16	RF-4
IN-5/8"-C11	16.0800	0.6330	0.7086	0.5511	0.3937	0.8661	0.3120	UT-14/16	RF-4
IN-3/4"-P6	19.0190	0.7487	0.7086	0.5511	0.3937	0.8661	0.3930	UT-18/25	RF-4
IN-3/4"-H7	19.0710	0.7508	0.7086	0.5511	0.3937	0.8661	0.3930	UT-18/25	RF-4
IN-3/4"-D10	19.1990	0.7558	0.7086	0.5511	0.3937	0.8661	0.3930	UT-18/25	RF-4
IN-3/4"-C11	19.2900	0.7594	0.7086	0.5511	0.3937	0.8661	0.3930	UT-18/25	RF-4

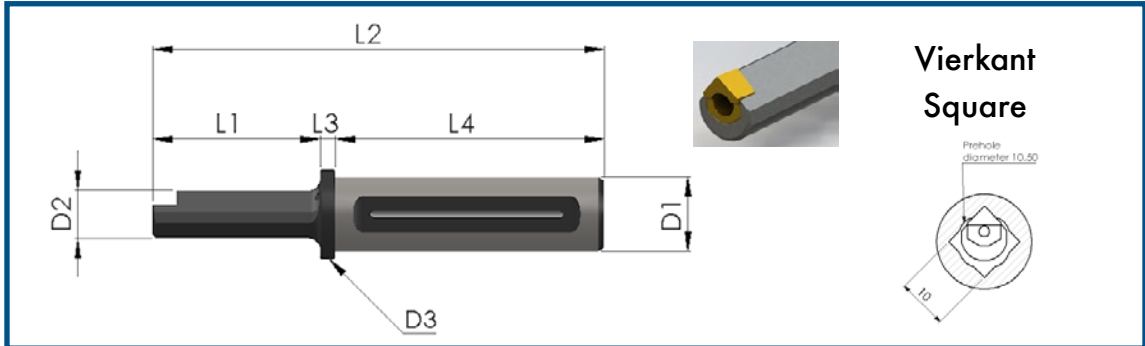


Stoßwerkzeuge - Vierkant

Square Broaching Tools



UT



CODE	L1	L2	L3	L4	D1	D2	D3	P	T	V	Min Ø
UT-SQ-8/10-25	30	129	9	90	25	8	30	PN-1	T08	VN-1	8
UT-SQ-10/13-25	40	139	9	90	25	10	30	PN-1	T08	VN-1	10
UT-SQ-13/16-25	50	149	9	90	25	13	30	PN-2	T15	VN-2	13
UT-SQ-16/19-25	52	151	9	90	25	16	30	PN-3	T20	VN-3	16
UT-SQ-19/27-25	86	185	9	90	25	18	30	PN-3	T20	VN-3	19
UT-SQ-27/37-25	100	199	9	90	25	25	30	PN-4	T20	VN-3	27
UT-SQ-8/10-32	30	139	9	100	32	8	38	PN-1	T08	VN-1	8
UT-SQ-10/13-32	40	149	9	100	32	10	38	PN-1	T08	VN-1	10
UT-SQ-13/16-32	50	159	9	100	32	13	38	PN-2	T15	VN-2	13
UT-SQ-16/19-32	52	161	9	100	32	16	38	PN-3	T20	VN-3	16
UT-SQ-19/27-32	86	195	9	100	32	18	38	PN-3	T20	VN-3	19
UT-SQ-27/37-32	100	209	9	100	32	25	38	PN-4	T20	VN-3	27
UT-SQ-37/50-32	140	249	9	100	32	35	45	PN-5	BR5	VN-4	37

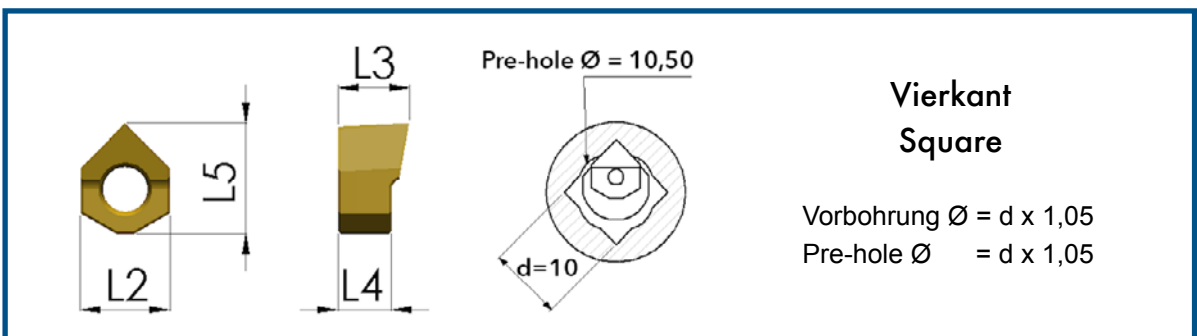
Platten - Vierkant

Square Inserts

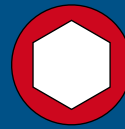


mm

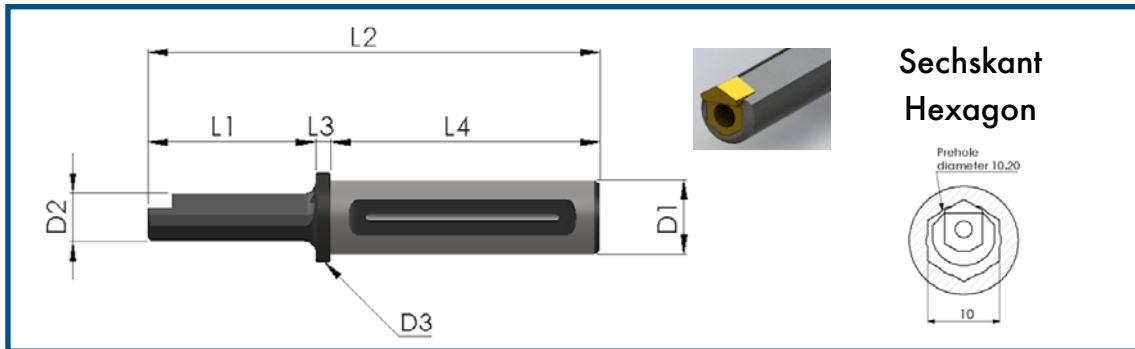
IN



CODE	Bearbeitungsbereich Operation Range	L2	L3	L4	L5	Tool	RF
IN-SQ-8/10	8/9	6	7	5	7	UT-SQ-8/9	RF-1
IN-SQ-10/13	10/12	6	7	5	7,5	UT-SQ-10/12	RF-1
IN-SQ-13/16	13/15	6	8	6	12	UT-SQ-13/15	RF-2
IN-SQ-16/19	16/18	10	8	6	12,5	UT-SQ-16/18	RF-2
IN-SQ-19/27	19/26	13	13	10	17	UT-SQ-19/26	RF-3
IN-SQ-27/37	27/36	18	14	10	22	UT-SQ-27/36	RF-4
IN-SQ-37/50	37/50	26	18	10	30	UT-SQ-37/50	RF-5



Hexagon Broaching Tools



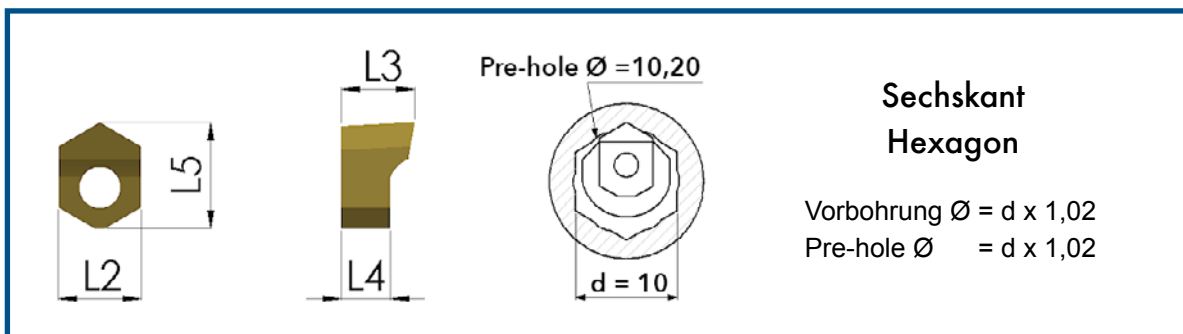
CODE	L1	L2	L3	L4	D1	D2	D3	P	T	V	Min Ø
UT-HEX-9/11-25	30	129	9	90	25	8	30	PN-1	T08	VN-1	9
UT-HEX-11/17-25	40	139	9	90	25	10	30	PN-1	T08	VN-1	11
UT-HEX-17/28-25	56	155	9	90	25	15	30	PN-2	T15	VN-2	17
UT-HEX-28/37-25	86	185	9	90	25	25	30	PN-3	T20	VN-3	28
UT-HEX-37/45-25	126	225	9	90	25	35	45	PN-4	T20	VN-3	37
UT-HEX-9/11-32	30	139	9	100	32	8	38	PN-1	T08	VN-1	9
UT-HEX-11/17-32	40	149	9	100	32	10	38	PN-1	T08	VN-1	11
UT-HEX-17/28-32	56	165	9	100	32	15	38	PN-2	T15	VN-2	17
UT-HEX-28/37-32	86	195	9	100	32	25	38	PN-3	T20	VN-3	28
UT-HEX-37/45-32	126	235	9	100	32	35	45	PN-4	T20	VN-3	37
UT-HEX-45/70-32	140	249	9	100	32	40	45	PN-5	BR5	VN-4	45

Platten - Sechskant
Hexagon Inserts



mm

IN



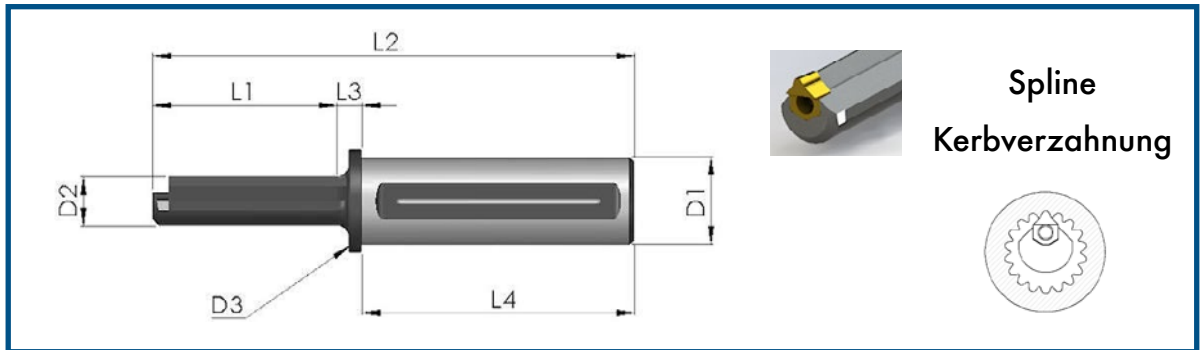
Sechskant
Hexagon

Vorbereitung Ø = d x 1,02
Pre-hole Ø = d x 1,02

CODE	Bearbeitungsbereich Operation Range	L2	L3	L4	L5	Tool	RF
IN-HEX-9/11	9/10	6	7	5	7,5	UT-HEX-9/10	RF-1
IN-HEX-11/17	11/16	6	7	5	8	UT-HEX-11/16	RF-1
IN-HEX-17/28	17/27	10	9	6	13,5	UT-HEX-17/27	RF-2
IN-HEX-28/37	28/36	13	14	10	18,5	UT-HEX-28/36	RF-3
IN-HEX-37/45	37/44	18	14	10	22	UT-HEX-37/44	RF-4
IN-HEX-45/70	45/70	26	16	10	30	UT-HEX-45/70	RF-5



Spline Broaching Tools



CODE	L1	L2	L3	L4	D1	D2	D3	P	T	V	Min Ø
UTS-02-25	25	124	9	90	25	6,5	30	PN-1	T08	VN-1	7
UTS-03-25	30	129	9	90	25	8	30	PN-1	T08	VN-1	8,5
UTS-04-25	40	139	9	90	25	10	30	PN-1	T08	VN-1	10,5
UTS-05-25	46	145	9	90	25	12	30	PN-1	T08	VN-1	12,5
UTS-06-25	56	155	9	90	25	16	30	PN-2	T15	VN-2	16,5
UTS-08-25	68	162	9	90	25	20	30	PN-2	T15	VN-2	21
UTS-10-25	86	185	9	90	25	25	30	PN-3	T20	VN-3	28
UTS-12-25	102	203	9	90	25	30	30	PN-3	T20	VN-3	33
UTS-14/16-25	126	221	5	90	25	35	37	PN-4	T20	VN-3	38
UTS-02-32	25	134	9	100	32	6,5	37	PN-1	T08	VN-1	7
UTS-03-32	30	139	9	100	32	8	37	PN-1	T08	VN-1	8,5
UTS-04-32	40	149	9	100	32	10	37	PN-1	T08	VN-1	10,5
UTS-05-32	46	155	9	100	32	12	37	PN-1	T08	VN-1	12,5
UTS-06-32	56	165	9	100	32	16	37	PN-2	T15	VN-2	16,5
UTS-08-32	68	172	9	100	32	20	37	PN-2	T15	VN-2	21
UTS-10-32	86	195	9	100	32	25	37	PN-3	T20	VN-3	28
UTS-12-32	102	213	9	100	32	30	37	PN-3	T20	VN-3	33
UTS-14/16-32	126	231	9	100	32	35	37	PN-4	T20	VN-3	38
UTS-18/25-32	140	249	9	100	32	40	45	PN-5	B.5	VN-4	42

* Platten nach Anfrage, gefertigt nach Werkstückzeichnung

* Inserts upon request, manufactured according to workpiece drawing

**Außenbearbeitung
External**

CODE	L1	L2	L3	L4	L5	L6
UTE-20-DX	150	110	20x20	32,5	20	12,5
UTE-20-SX	150	110	20x20	32,5	20	12,5
UTE-25-DX	150	110	25x25	37,5	25	12,5
UTE-25-SX	150	110	25x25	37,5	25	12,5

* Platten nach Anfrage, gefertigt nach Werkstückzeichnung

* Inserts upon request, manufactured according to workpiece drawing



Slotting Tools

Längsnut Mini
Keyway Mini

CODE	L1	L2	D1	D2
UT-1/8-19.05	90	15	30	19,05
UT-1/8-20	90	15	30	20
UT-1/8-25	90	15	30	25
UT-1/8-32	100	15	38	32

Platte Mini
Insert Mini

CODE	L1	L2	F1	D1	D2	€
IN-1/8	18	2	Auf Anfrage	10 H7	15	99 €

Werkzeug für Nutstoßgeräte
aller gängigen Marken
Slotter for Live Broaching Tools
of all major makers

CODE	L1	L2	L3	D1	D2	D3	Min Ø	R	T	V
TM-2	25	a. Anfrage	5	a. Anfrage	7	20	7	RF-1	T08	VN-1
TM-3	30	a. Anfrage	5	a. Anfrage	8	20	8,5	RF-1	T08	VN-1
TM-4	40	a. Anfrage	5	a. Anfrage	10	20	10	RF-1	T08	VN-1
TM-5	46	a. Anfrage	5	a. Anfrage	12	20	13	RF-1	T08	VN-1
TM-6	56	a. Anfrage	5	a. Anfrage	16	20	17	RF-2	T15	VN-2
TM-8	64	a. Anfrage	5	a. Anfrage	20	20	21	RF-2	T15	VN-2
TM-10/12	70	a. Anfrage	5	a. Anfrage	22	20	24	RF-3	T20	VN-3





Drehmaschinen | Lathes

KIT-LAT-725
KIT-LAT-725-L

KIT-LAT-732
KIT-LAT-732-L

- ▼ UT-03, 04, 05, 06, 08, 10, 12
- ▼ B32 ▼ B40
- ▼ 14 Platten / Inserts
- ▼ RF-1, RF-2, RF-3
- ▼ 3 Schraubenzieher / Screwdrivers
- ▼ Werkzeughalterbasis / Tool carrier



Räummaschinen | Broaching Machines

KIT-STO-625
KIT-STO-625-L

KIT-STO-632
KIT-STO-632-L

- ▼ UT-03, 04, 05, 06, 08, 10
- ▼ AD35 ▼ AD40
- ▼ 12 Platten / Inserts
- ▼ RF-1, RF-2, RF-3
- ▼ 3 Schraubenzieher / Screwdrivers
- ▼ Werkzeughalterbasis / Tool carrier

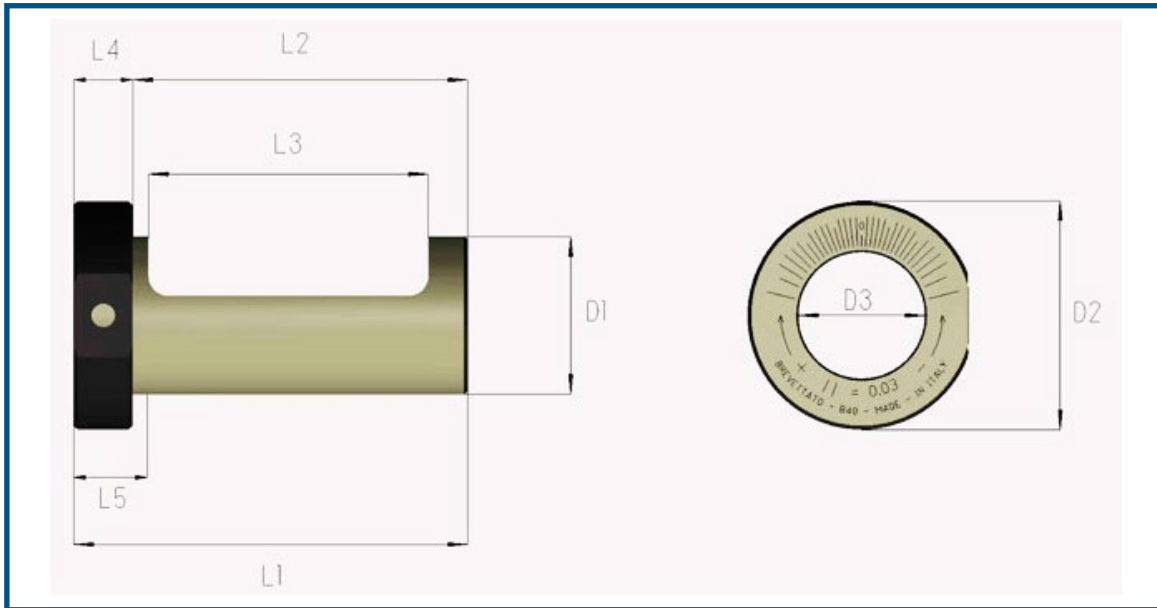


Räummaschinen | Broaching Machines

KIT-STO-825
KIT-STO-825-L

KIT-STO-832
KIT-STO-832-L

- ▼ UT-03, 04, 05, 06, 08, 10, 12, 14/16
- ▼ AD35 ▼ AD40
- ▼ 18 Platten / Inserts
- ▼ RF-1, RF-2, RF-3, RF-4
- ▼ 3 Schraubenzieher / Screwdrivers
- ▼ Werkzeughalterbasis / Tool carrier



Exzentrische Buchse

- ▶ Exzentrische Buchse für Drehmaschinen ohne Y-Achse, zur Achsen-Korrektur
- ▶ Gefertigt aus gehärtetem Werkzeugstahl
- ▶ Fehlerverbesserung auf Y-Achse: 0,5 mm Y+ 0,5 mm Y-
- ▶ Verfügbar in verschiedenen Größen

Eccentric Sleeves

- ▶ The eccentric bushing is necessary for all lathes without the Y axis
- ▶ Manufactured in tool steel then tempered and adjusted
- ▶ Correction on Y axis: From 0.5 mm Y+ to 0.5 mm Y-
- ▶ Available in different sizes, allowing it to be used with different holders

CODE	D3 Ø	L1	L2	L3	L4	L5	D1	D2
B-32	25	85	70	58	15	20	32 H7	55
B-40	32	95	80	66	15	20	40 H7	55
B-50	32	115	100	75	15	20	50 H7	65
B-60	32	115	100	75	15	20	60 H7	80
B-32 VDI	25	65	50	38	15	20	32 H7	55
B-40 VDI	32	80	65	51	15	20	40 H7	55
B-50 VDI	32	95	80	55	15	20	50 H7	65
B-60 VDI	32	95	80	55	15	20	60 H7	80

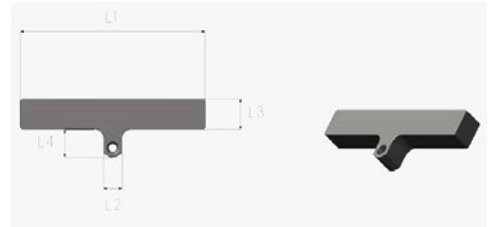




Accessories

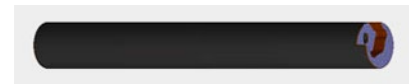
Zentrierplatte Centring Plates

CODE	L1	L2	UT
PN-1	6	50	UT 3-4-5
PN-2	10	50	UT 6-8
PN-3	13	60	UT 10-12
PN-4	18	70	UT 14/16
PN-5	26	70	UT-18/26



Stange zum Nachschleifen Sharpening Stems

CODE	L1
RF-1	150
RF-2	150
RF-3	150



Torx-Schrauben für Platten Torx Screws for Fixing Inserts

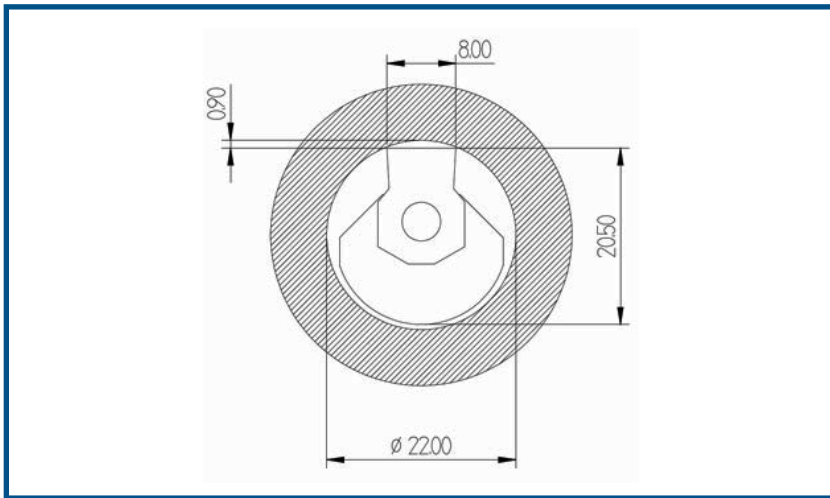
CODE	T	D
VN-1	Torx	M2,5 x 8
VN-2	Torx	M4 x 10
VN-3	Torx	M6 x 15
VN-4	TCEI	M8 x 16



Torx-Schraubenzieher Torx Screwdriver

CODE	T	D
T-08	Torx	8
T-15	Torx	15
T-20	Torx	20





- ▶ Zum Nutstoßen ist es notwendig, einen kleineren Durchmesser als den von der Bohrung ins CNC-Programm einzugeben.
- ▶ *To implement the keys in the holes you need to specify in the CNC program, a value which is smaller than the hole diameter, according to the following parameters.*

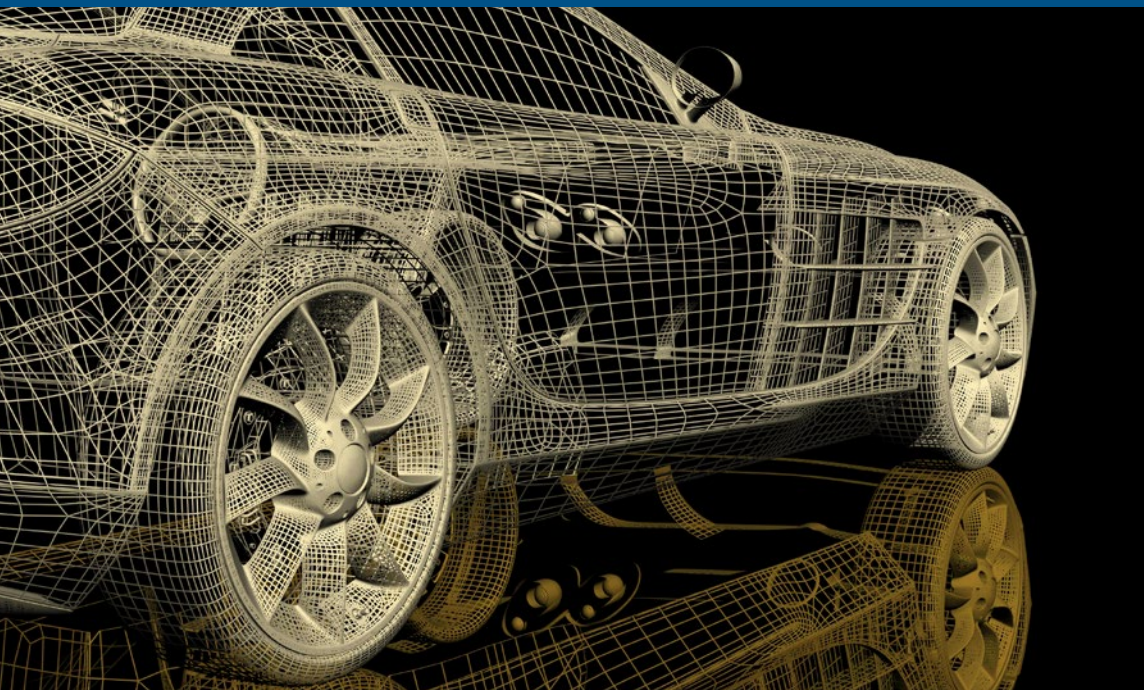
Eine Nutzenstoßbearbeitung von 20 mm entspricht die Belastung auf der Maschinenspindel, einer Bohrbearbeitung von Ø14mm

The load on the machinespindle during a slotting operation of 20 mm corresponds to a drilling operation of Ø14mm

Breite Width	Reduzierung Reduction	Durchmesser Diameter
3mm	-0.30	9mm
4mm	-0.40	11mm
5mm	-0.50	14mm
6mm	-0.50	18mm
8mm	-0.80	22mm
10mm	-0.80	32mm
12mm	-1.00	40mm

Material	Schnittgeschw. Cutting Speed	Schnitttiefe Cutting Depth	Standzeit (Meter) Cutting Life (meters)
Aluminium Aluminum	10 m/min	0,15/0,25 mm	1500
Gußeisen Cast Iron	6 m/min	0,1/0,2 mm	300
Stahl 1040 / C40 Steel	6 m/min	0,05/0,12 mm	200
Inox Stainless Steel	5 m/min	0,03/0,05 mm	50





Gisstec GmbH

Heesenstr. 70
40549 Düsseldorf
Germany

Tel. +49 211 3613 920
Fax. +49 211 3613 091

info@gisstec.com
www.gisstec.com

www.gisstec.de
www.gisstec.co.uk
www.gisstec.es

PDF Kataloge | Catalogs: gisstec.com/download

@Gisstec